

Caligare

Flow Inspector **3**



## NetFlow Monitoring

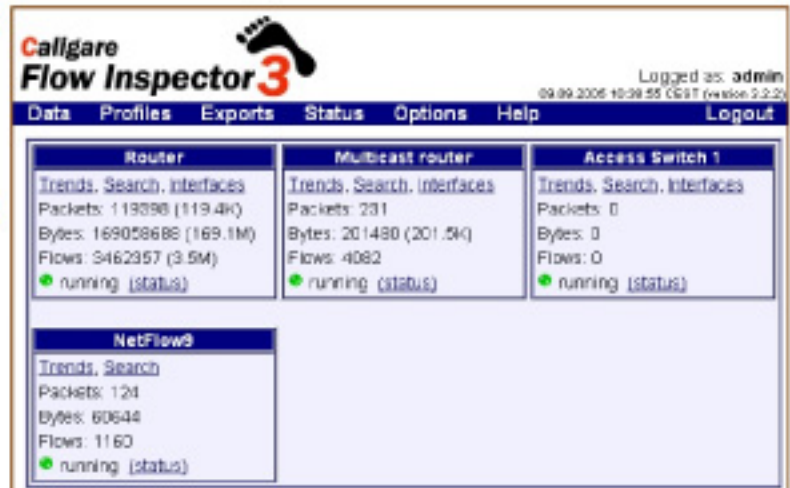
What are your needs ?  
What are challenges of the IT administrator or IT manager of corporate environment?  
How to achieve your (IT person) and company's goals?

### Caligare Solution

Caligare Flow Inspector (CFI) is a high-performance, Linux Based network management and monitoring solution for large-scale networks. CFI provides realtime traffic monitoring, smart flow filtration, aggregation and statistical evaluation. It is capable of providing multi-criterial data flow selection using IP addresses, protocols, ports etc., including heuristic methods for protocols using dynamic ports.

### The Benefits

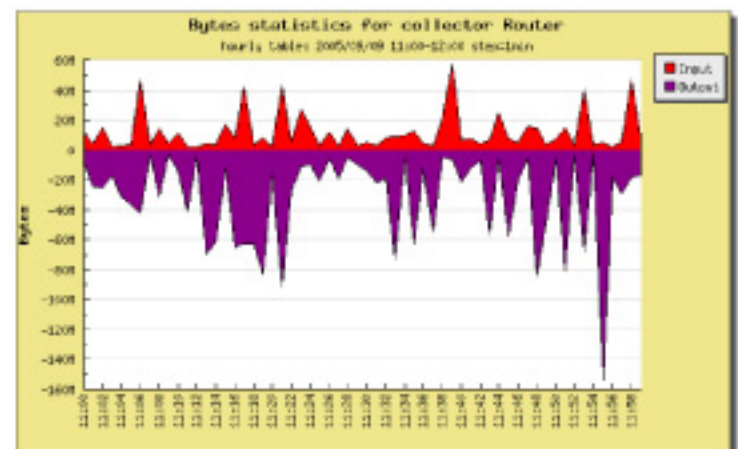
- Having the ability to determine the true health of your network on a daily basis is a key component of your IT strategy and CFI gives you this wide visibility.
- Observe and monitor the content of your corporate network.
- Realize which applications are being used and by who.
- Show network traffic and various statistics.
- Find bottlenecks in the network lines.
- Ensure stability and efficiency of the system.
- Diagnose network problems such as security attacks and routing troubles.
- Eliminate problems with network applications.
- Scan various network protocols.
- Diagnose issues that degrade system performance, leading to quick resolution of issues without adding unnecessary infrastructure or bandwidth.
- Having the ability to access historical data, seeing patterns and trends, allows our staff to be more proactive in planning for the future.
- Having detailed information on where, by who and how specific applications are being used and how that usage affects the network.
- Using NetFlow data that is already present on company's routers and making real business decisions based on this information from a full enterprise perspective.



CFI software was engineered to create a secure network monitoring platform based on industry standards that will fit corporate existing security policies. CFI was created for companies that need to plan, build, maintain and manage their network and at the same time keep their network more secure, efficient and reliable.

The ability to monitor in real-time significantly reduces the time it takes to identify and troubleshoot, thus keeping operations running smoothly and reducing costly downtime.

Caligare offers software products and services especially to large and mid-size companies (organizations with large network systems) to help them deal with suspicious network activities (e.g. security attacks, routing troubles etc.), to keep track of, plan and diagnose network problems.





## Features & Benefits

| Feature                            | Function   | Benefit  |
|------------------------------------|--|--|
| Quick Installation                 | Auto-install from CD or download and burn CD-ISO image.  | Quick and easy install with no technical knowledge required.   |
| Web Interface                      | Familiarly, comfortable and wide accessible user interface. Easy access to configure collectors and all parameters.  | Your customers can access statistics from anywhere at that moment.   |
| 36 Trend Statistics                | View historical or actual reports with many types of data traffic filtering. Possibility to find top talkers, conversations, interfaces, detected applications, protocols, autonomous systems etc. | View reports on what makes up the bandwidth usage, find and troubleshoot network problems. Quickly see what is happened in your network. |
| Low-level Search                   | Customizable search queries with maximum detail displaying.  | Administrator can use it for network problem localization (e.g. worm infected stations or attack sources)                                |
| Interface Statistics               | Input and output interfaces utilization with ability to filter traffic.  | Quickly view the interface utilization. It can be used for finding bottlenecks in your network.  |
| Utilization Maps                   | Anonymously accessible images with objects. Each object is computed in 5 minute utilizations.  | You can include traffic graphs into your corporate web pages.  |
| Application Recognizer             | Software includes heuristic methods for recognizing applications.  | Possibility to specify own applications. Built-in peer-to-peer application rules - Direct Connect, Gnutella, E-Donkey etc.               |
| Group Rights and View Restrictions | Configure access rights, IP range or interface restrictions for any user group.  | Set group role (e.g. administrator, guest, collector maintainer etc) and view restriction for your customers.                            |
| IP Address Detail                  | Get full detail about hostname.  | Find country, autonomous system, host status etc.  |
| Autonomous System Detail           | Query whois server to get all details about Autonomous System.   | Useful for service providers to find contact information of other ASes.  |
| Storage data format                | Store only useful NetFlow fields. More accounting fields requires more disc space.   | Possibility to specify which fields are interesting, reduction disc space and increasing search speed                                    |
| Query results export               | Send results to CSV file or send it to email address.  | CSV file can be opened in the external software (e.g. Excel).  |
| Table export                       | Any data table can be exported, backed up and imported anytime.  | You can export old tables to external mass storage devices.  |
| Networks                           | Configure monitoring groups based on a specific IP address, range or network.  | Quick specification of searching criteria.   |
| Profiles                           | Save trends or search conditions into user or global profile.  | Search queries can be quickly and simply reused.   |
| NetFlow Forwarding                 | Redirect NetFlow data stream to another collector(s).  | Useful for external data analysis.   |
| Configuration Generator            | Create NetFlow Configuration for Cisco IOS/CatOS devices.  | Easy cut-and-paste configuration into your device to activate NetFlow export.  |
| Anonymous login                    | Enable anonymous access with configurable restrictions.  | Guest access without password.   |
| LDAP authentication                | LDAP server is used for authentication.  | Uniform access method in the corporate environment.  |
| Skins                              | Customizable software face.  | Administrator can define own skins.  |
| Multilanguage                      | Set language closest to the user.  | Software can be translated into any language.  |
| Graph types                        | Accumulated or non-accumulated bar, line or spider graphs.   | Possibility to use suitable graphs.  |
| Graph resolution                   | Each user can set graph resolution.  | Fit user needs.  |
| Distribution                       | A fully distributed system; only limited by platform size.   | Each component of the software can be installed on the separate server.  |



## Technical specifications

### Hardware requirements

Minimum specification:

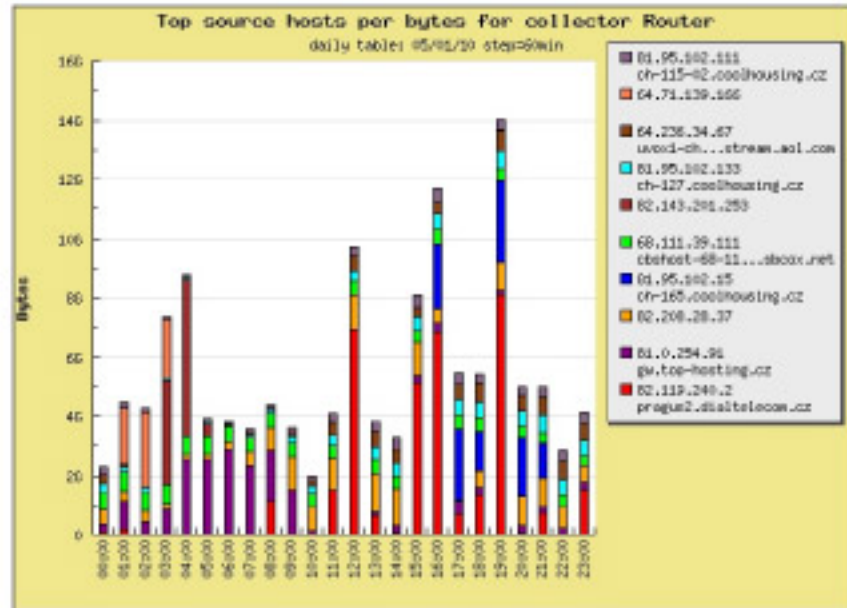
- 256 MB RAM (optimal 1024MB)
- 20 GB free hard disc space for database
- 100 MB free hard disc space program files
- Pentium III, 1 GHz or greater
- Cisco router or any other that support NDE

These specifications will increase based on number of devices monitored. The highest computing performance is put on the database system. Computing requirements for the other CFI components are lower than for the database system.

Manufacturer devices supporting CFI software are: Cisco Systems, Juniper, Extreme Networks and 3COM. CFI supporting devices series (Cisco routers and/or switches): 1400, 1600, 1700, 2500/2600, 3600, 4500/4700, AS5300/5800, 7200/7500, Catalyst 4500, Catalyst 5000/6500/7600, ESR 10000, GSR 12000. Please, ask your hardware supplier if your devices support NetFlow export.

### Software requirements

- Linux
- MySQL database
- PHP
- Apache



CFI works under the all distribution of Linux (Debian, RedHat, Suse, Slackware, etc.), but preferred is Debian distribution. The Linux environment under which CFI software runs is considerable more stable and efficient, increasing the performance of the software. Not enough Linux experienced customers can use also our self-installing software CD ISO version. Please check our website for more details. NetFlow export versions 1,5,6,7 and 9 are supported.



For more information about Caligare and our products, please email:  
[caligare@caligare.com](mailto:caligare@caligare.com)  
or visit web pages:  
<http://www.caligare.com>



Caligare Flow Inspector has been tested in accordance with interoperability criteria set by Cisco Systems, Inc. and is compatible with the Cisco IOS Software - NetFlow.